

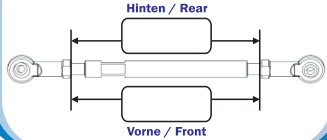


Name/name: \_\_\_\_\_

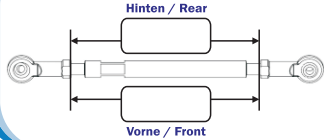
Datum/date: \_\_\_\_\_

Rennstrecke/Race track: \_\_\_\_\_

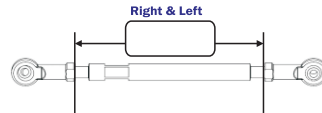
### Pushrods



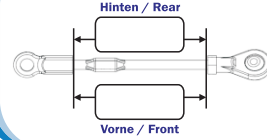
### Spurstangen/Steering rods



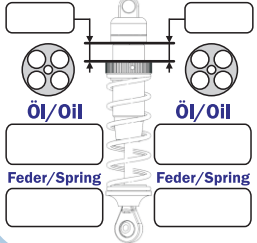
### Servoanlenkung/Servo rods



### Stabi/Anti roll bar



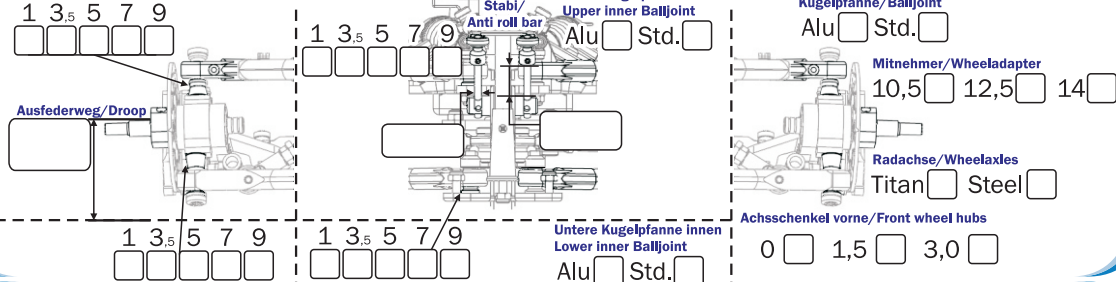
### Vorne Front Hinten Rear



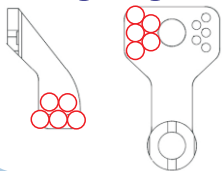
### Nachlauf - Radstand - Servo Saver Position/Caster - Wheelbase - Servo saver position



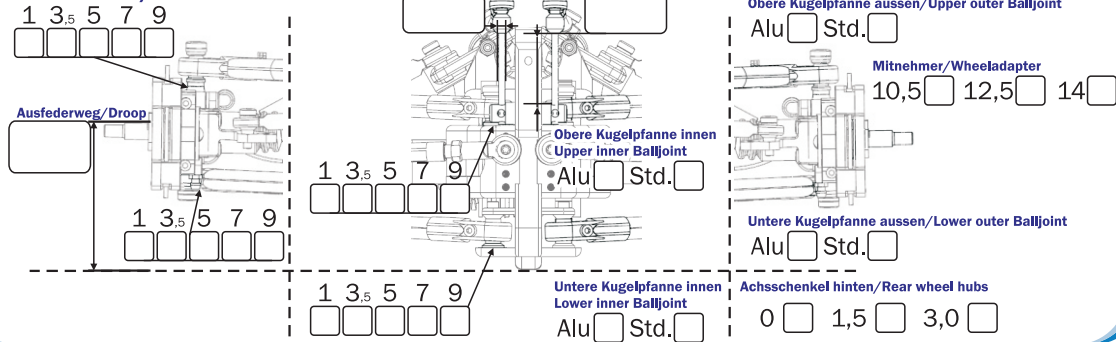
### Vorderachse/Frontaxle



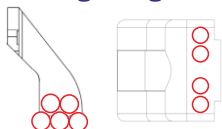
### Anlenkung vorne Steering linkage front



### Hinterachse/Rearaxle



### Anlenkung hinten Steering linkage rear



### Zubehör/Optional

Motorabstützung vorne rechts/Engine support front right  Chassisversteifung vorne rechts/Chassis stiffer front right  Dämpferbrücke hinten/Shock tower rear

### Übersetzung Drive ratio

23 24 25   
39 40 41   
15 16   
48

### Differential Differential

2fach/double   
4fach/quad   
MAG/magnetic   
Andere/Other

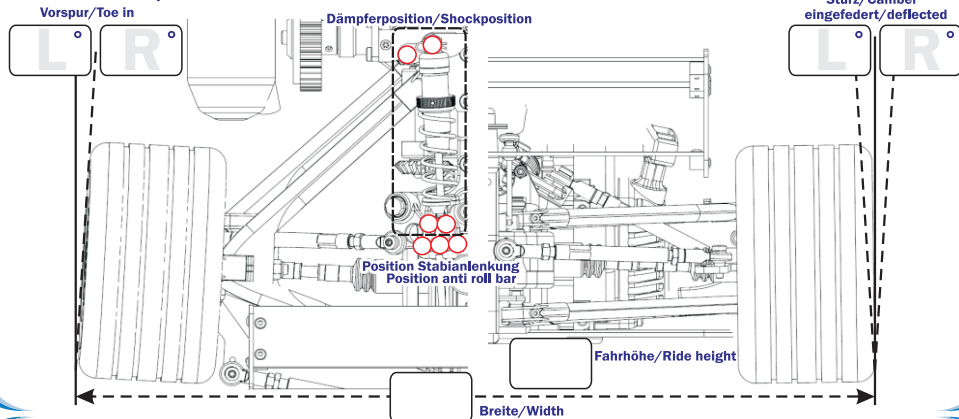
### Reifen/Tyres

Tyre additive   
Additive residence time   
Vorne Front

### Ausstattung/Equipment

Karosserie/Body: \_\_\_\_\_  
Motor/Engine: \_\_\_\_\_  
Luftfilter/Airbox: \_\_\_\_\_  
Auspuff/Pipe: \_\_\_\_\_  
Kupplung/Clutch: \_\_\_\_\_  
Einkuppeldrehzahl/Engaging RPM: \_\_\_\_\_

### Hinterachse/Rearaxle



### Vorderachse/Frontaxle

